

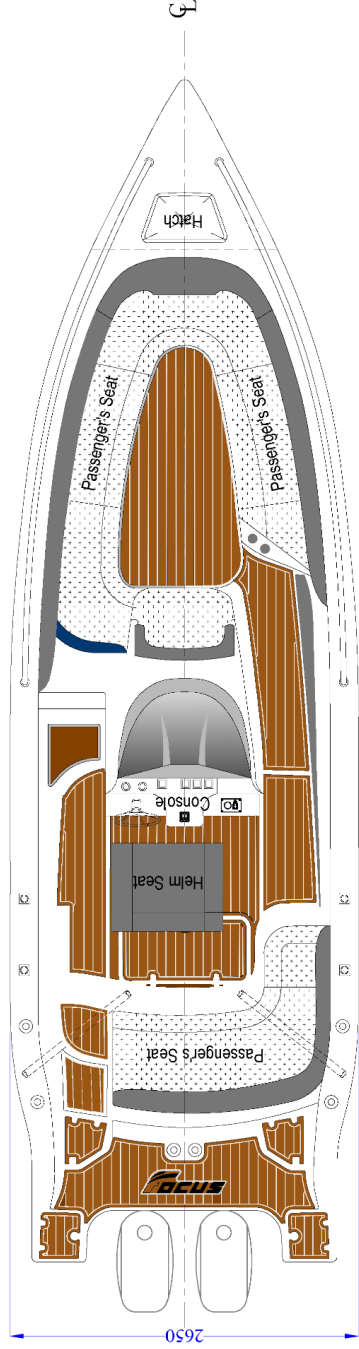
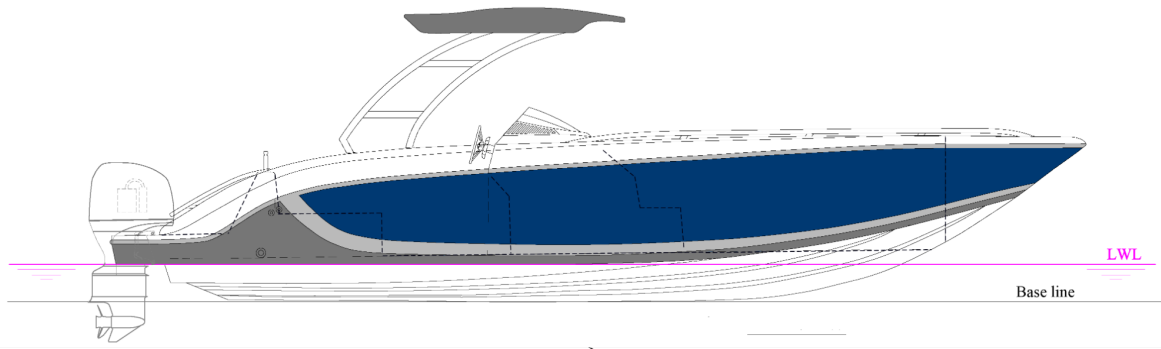


**TECHNICAL SPECIFICATIONS**

# CONTENT



Boat Layout.....	3
Technical Information.....	4
Construction.....	5
Mooring and Anchoring.....	5
Engine Supply.....	5
Plumbing.....	6
Electrical.....	6
Openings and Storages.....	8



## Technical Information

<u>Length</u>	<u>28'8.54m</u>
<u>Length Overall</u>	<u>29'6''/9m</u>
<u>Beam</u>	<u>8'7''/2.62m</u>
<u>Air Clearance</u>	<u>9'8''/2.95m</u>
<u>Draft</u>	<u>1'10''/0.55m</u>
<u>Displacement</u>	<u>6834lbs./3.1.tons</u>
<u>Fuel Capacity</u>	<u>63USGal/290L</u>
<u>Freshwater capacity</u>	<u>13USGal/60L</u>
<u>Engines - Minimum HP</u>	<u>2x 140HP</u>
<u>Engines - Maximum HP</u>	<u>2x 300HP</u>
<u>Engines – Recommended HP</u>	<u>2x 150HP</u>
<u>CE Certification Category</u>	<u>C (Pending)</u>

## **Construction**

Polyester and high-quality resin

High Strength Hull Structure



## **Mooring and Anchoring**

Heavy-duty stainless-steel bow eye

2 Retractable stainless mooring steel cleats

## **Engine Supply**

3 Battery Trays

Hose in hull structure for cable access

Single Polyester Fuel Tank of 290L / 76 US Gal.

Fuel Hose from tank to filter

Fuel sender with wires to center console

## **Plumbing**

Fresh water tank – 60L / 16 US Gal.

Fresh water pump (18 LPM / 5 GPM)

Transom handshower

1 Automatic Bilge Pump (1100GPM) in Hull

## **Electrical**

Power Circuit 12V

12V General Distribution panel switch with engraved logo

Fuse box in center console compartment

LED navigation lights

LED interior courtesy light

LED dome lights

Spare 12V switches on panel for accessories

Trim Tabs pair (Flaps)

## **Boat Layout**

## **Cockpit**

Stainless Steel Soft Top with anti UV fabric

Center console with side bar – includes cooler box

Anti-slip floor

Self-draining cockpit

Stainless steel bow rail

Complete upholstery with comfortable foam

Double driver seat with foldable backrest

Rear L-bench seat usable as saloon

Front U-shape seat for up to 8 people with logo stitching

Seat in front of center console

Console stainless steel aerodynamic plates

2 Rod holders

2 Thru vents for console

5 Cup holders with stainless steel rims

## **Transom**

Incorporated swimming platform

Transom Ladder (Port)

Steps for interior access

Pair of stainless-steel handles

## **Hull**

Stainless Steel Fender rail

Non-return scupper valves

Stainless steel bilge pump exit

## **Openings and Storages**

### **Transom**

2 Storage boxes under steps

### **Cockpit**

Large storage under L-shape seat storage (center)

Storage under L-shape seat with access to battery switches  
(Starboard)



Bar compartment storage (Port)

Glove box on center console

Large storage cabinet under console

Two storage compartments under front U-Shape seat

Anchor box on bow

3 Interior side compartments for towel storage



Imersea Dealers Ltd

Mont Mascall

30704 Petit Raffray - Mauritius

Tel. (+230) 282 30 39

Whatsapp. (+230) 5757 6857

Email. [info@imersea.net](mailto:info@imersea.net)

[Imersea.net](http://Imersea.net)